

KS Series Pump | Submittal Data

Vertical Split Coupled Pumps

Submittal No: 301-1172D | Model: 2009D | RPM: 3500 - 60 Hz | Effective: October 31, 2019 | Supersedes: New

JOB: _____

REPRESENTATIVE: _____

ENGINEER: _____

CONTRACTOR: _____

PRODUCT DATA

ITEM NO. _____ MODEL NO. 2009D

IMPELLER DIAMETER _____ HORSEPOWER _____

GPM _____ VOLTAGE _____

HEAD/FT _____ RPM 3500

WEIGHT _____ PUMP/MOTOR _____

NSF 61 CERTIFIED YES NO SUPPORT STAND OPTION YES NO
(Ductile Iron ASTM A536-84 Grade 65-45-12)

DIMENSIONS

Model No. | 2009D

Flange Size (Suction x Discharge) | 2 x 2 (51 x 51)

HORSEPOWER	15	20	25	30	40	50
MOTOR FRAME TEFC	254TC	256TC	284TSC	286TSC	324TSC	326TSC
MOTOR FRAME ODP	215TC	254TC	256TC	284TSC	286TSC	324TSC
WEIGHT WITHOUT OPTIONAL STAND LBS (KG)	517.17 (235)	539.17 (245)	602.2 (273)	693.5 (315)	738.6 (335)	857.4 (389)
WEIGHT WITH OPTIONAL STAND LBS (KG)	538.03 (244)	560.03 (254)	623.06 (283)	714.32 (324)	759.46 (344)	878.26 (398)
FLANGE SIZE ASA	2 (51)					
A*	ANSI CLASS 125: 9 (229)					
	ANSI CLASS 250: 9.25 (235)					
B*	ANSI CLASS 125: 10 (254)					
	ANSI CLASS 250: 10.25 (260)					
C	4.87 (124)					
D	20.97 (533)		21.22 (539)			
E MAX	20.03 (509)		23.39 (594)		25.28 (642)	
F	6.16 (156)					
G	6.72 (171)					
J DIA	13.26 (337)		14.78 (375)		16.88 (429)	
K	4					
L	3/8-16 UNC-2B					
M	2.5 (64)					
N	6 (152)					
P	9.38 (238)					
Q	0.63 (16)					
R	7.75 (197)					

Configuration	DOE Basic Model Number	PEI Value		Energy Rating
Bare Pump	KS2009D-2P-BP	PEI _d	0.81	19
Pump + Motor	KS2009D-2P-PM	PEI _d	0.81	19

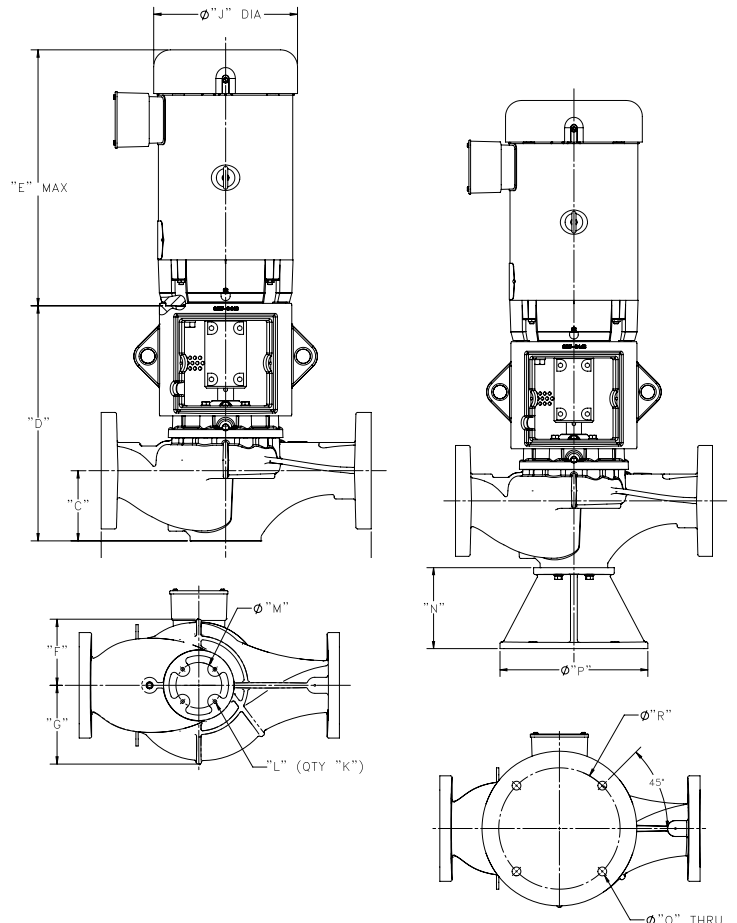
OPERATING SPECIFICATIONS

FLANGE	PRESSURE	TEMPERATURE
ANSI Class 125	175 PSIG* (1210 KPA)	250°F (120°C)
ANSI Class 250	300 PSIG** (2070 KPA)	250°F (120°C)

Motors: All NEMA Standard (TC Frame)

* In accordance with ANSI Standard B16.1 Class 125

** In accordance with ANSI Standard B16.1 Class 250



*A & B Dimensions apply for all pump sizes.

English dimensions are in inches. Metric dimensions are in millimeters.
Metric data is presented in (). Do not use for construction purposes unless certified.

MATERIALS OF CONSTRUCTION			CASING	COVER	IMPELLER	WEAR RING	SHAFT	COUPLING	MECHANICAL SEAL	SEAL FLUSH LINE ASSEMBLY	SUPPORT STAND
STANDARD CONSTRUCTION	BRONZE FITTED	125# FLANGE	Cast Iron ASTM A48/A48M-03 Class 30A	Cast Iron ASTM A48/A48M-03 Class 30A	Bronze ASTM B584 ALLOY C83600 or C84400	N/A	Stainless Steel TYPE 416"™" ASTM A582	Aluminum Alloy 6061-T6	Ceramic/EPT	Copper & Brass C3600	N/A
		250# FLANGE	Ductile Iron ASTM A536-84 Grade: 65-45-12	Cast Iron ASTM A48/A48M-03 Class 30A	Bronze ASTM B584 ALLOY C83600 or C84400	N/A	Stainless Steel TYPE 416"™" ASTM A582	Aluminum Alloy 6061-T6	Ceramic/EPT	Copper & Brass C3600	N/A
OPTIONAL		125# OR 250#	N/A	N/A	Stainless Steel ASTM A351/A 351M-08	Bronze ASTM B584-98A C92200	N/A	N/A	Tungsten Carbide/EPT or Silicon-Carbide/EPT	N/A	Ductile Iron ASTM A536-84 Grade 65-45-12
STANDARD CONSTRUCTION	NSF 61	125# FLANGE	Cast Iron ASTM A48/A48M-03 Class 30A	Cast Iron ASTM A48/A48M-03 Class 30A	Stainless Steel ASTM A351/A 351M-08	N/A	Stainless Steel TYPE 416"™" ASTM A582	Aluminum Alloy 6061-T6	Ceramic/EPT	Copper & Brass C3600	N/A
		250# FLANGE	Ductile Iron ASTM A536-84 Grade: 65-45-12	Cast Iron ASTM A48/A48M-03 Class 30A	Stainless Steel ASTM A351/A 351M-08	N/A	Stainless Steel TYPE 416"™" ASTM A582	Aluminum Alloy 6061-T6	Ceramic/EPT	Copper & Brass C3600	N/A
OPTIONAL		125# OR 250#	N/A	N/A	N/A	Bronze ASTM B584-98A C92200	N/A	N/A	N/A	N/A	Ductile Iron ASTM A536-84 Grade 65-45-12

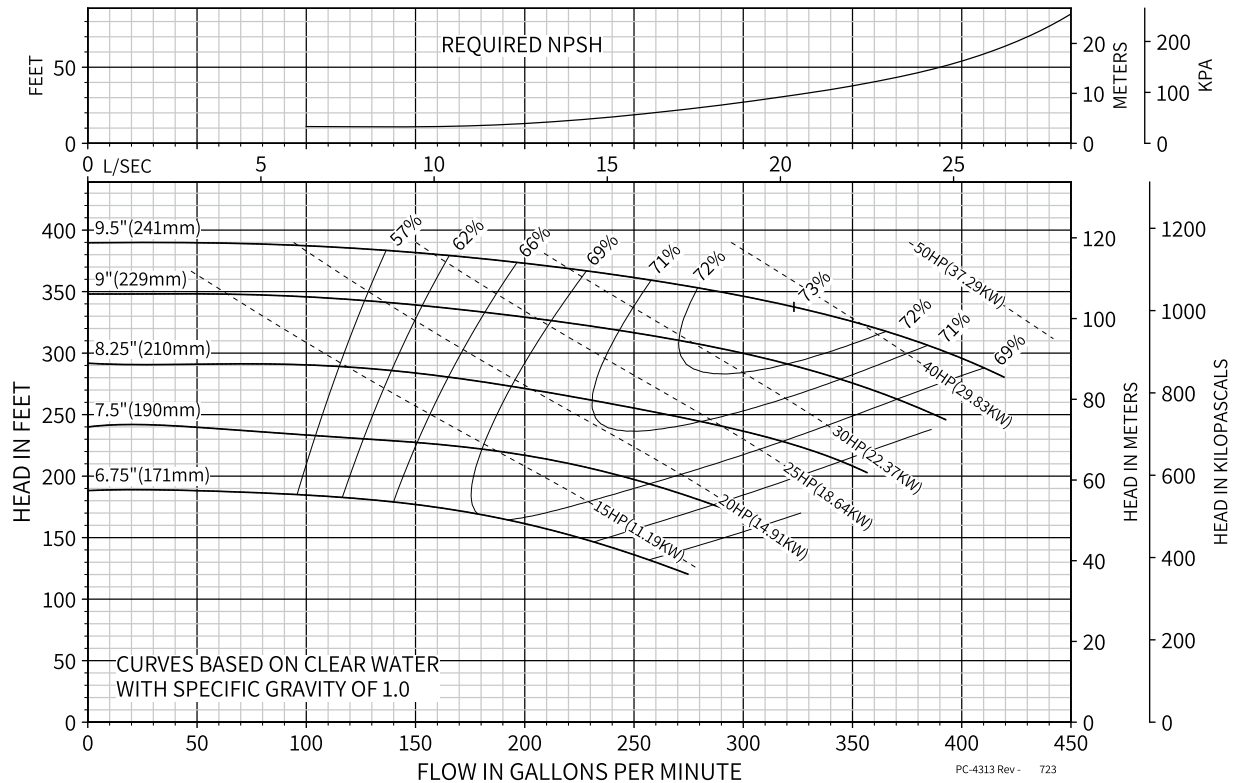
N/A - Not Available



KS Series | Model: 2009D | 3500 RPM

Curve No. 4313 | Min. Imp. Dia. 6.75" | Size 2x2x9.5 | October 21, 2019

Energy Efficiency Rating: DOE Basic Model Number: KS2009D-2P-PM
Pump & Motor: PEI_{CL} : 0.81 | ER_{CL} : 19



COMMENTS