

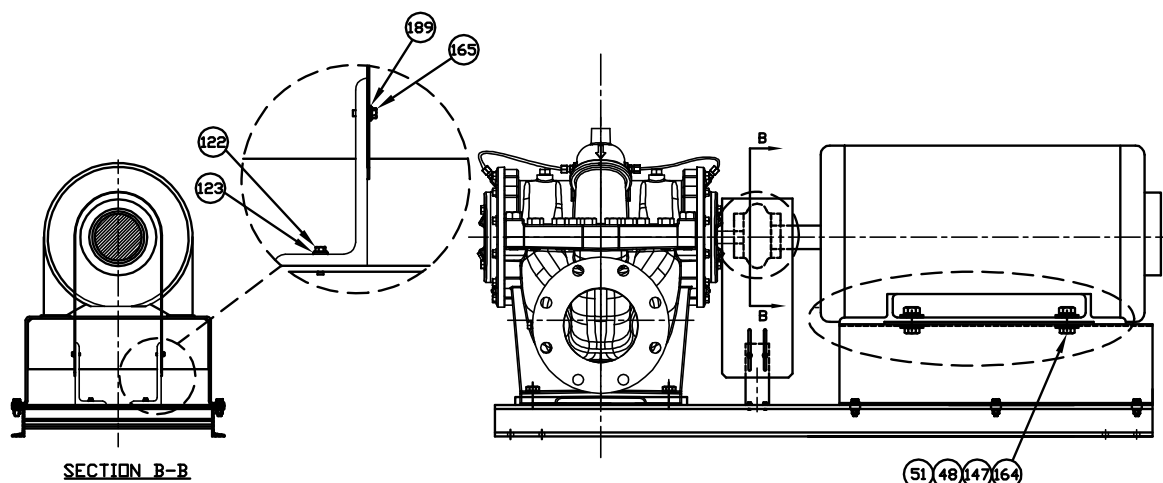
Replacement Parts List Hardware

304-537

For Models HS060509, HS060511, HS060512 & HS060515

SUPERSEDES: NEW

EFFECTIVE: August 10, 2016



ITEM NO.	QTY. REQ.	DESCRIPTION	PART NUMBERS			
			HS6X5X9	HS6X5X11	HS6X5X12	HS6X5X15
122	4	BOLT, COUPLER GUARD BRACKET	1/4-20 X 1 (10-243)			
123	4	WASHER, COUPLER GUARD BRACKET	1/4 (14-303)			
165	4	BOLT, COUPLER GUARD	1/4-20 X 3/4 (10-244)			
189	4	WASHER, COUPLER GUARD	1/4 (14-303)			

ITEM NO.	QTY. REQ.	DESCRIPTION	PUMP MODEL	NEMA MOTOR FRAME SIZE							
				184T	213T	215T	254T	256T	284T	286T	324T
51	4	LOCKWASHER, MOTOR MOUNT	HS6X5X9	-	3/8	3/8	7/16	7/16	1/2	-	-
			HS6X5X11	-	-	-				1/2	1/2
			HS6X5X12	-	-	-				-	5/8
			HS6X5X15	-	-	-				-	-
51	4	LOCKWASHER, MOTOR MOUNT		326T	364T	365T	404T	405T			
			HS6X5X9	-	-	-	3/4	3/4			
			HS6X5X11	-	-	-					
			HS6X5X12	1/2	-	-					
			HS6X5X15	5/8	5/8	5/8					

ITEM NO.	QTY. REQ.	DESCRIPTION	PUMP MODEL	IEC MOTOR FRAME SIZE							
				112M	132S	132M	160M	160L	180M	180L	200L
51	4	LOCKWASHER, MOTOR MOUNT									
			HS6X5X9	-	3/8	3/8	7/16	-	-	-	-
			HS6X5X11	-	-	-		7/16	-	-	-
			HS6X5X12	-	-	-		1/2	1/2	1/2	5/8
			HS6X5X15	-	-	-		-	-	-	-

ITEM NO.	QTY. REQ.	DESCRIPTION	PUMP MODEL	NEMA MOTOR FRAME SIZE								
				184T	213T	215T	254T	256T	284T	286T	324T	
48	4	HEX BOLT, MOTOR MOUNT	HS6X5X9	—	3/8-16 X 1 1/4	3/8-16 X 1 1/4	7/16-14 X 1	7/16-14 X 1	1/2-13 X 1 3/4	—	—	
			HS6X5X11	—	3/8-16 X 2	3/8-16 X 2				1/2-13 X 1 3/4	1/2-13 X 1 3/4	1/2-13 X 1 3/4
			HS6X5X12	—	—	—						
			HS6X5X15	—	—	—						
				326T	364T	365T	404T	405T				
48	4	HEX BOLT, MOTOR MOUNT	HS6X5X9	—	—	—						
			HS6X5X11	1/2-13 X 1 3/4	—	—						
			HS6X5X12		5/8-11 X 2	5/8-11 X 2						
			HS6X5X15		5/8-11 X 2 1/4	5/8-11 X 2 1/4				5/8-11 X 2 1/4	3/4-10 X 2 1/2	3/4-10 X 2 1/2

ITEM NO.	QTY. REQ.	DESCRIPTION	PUMP MODEL	IEC MOTOR FRAME SIZE							
				112M	132S	132M	160M	160L	180M	180L	200L
48	4	HEX BOLT, MOTOR MOUNT	HS6X5X9	-	3/8-16 X 1 3/4	3/8-16 X 1 3/4	7/16-14 X 1 3/4	-	-	-	-
			HS6X5X11	-	3/8-16 X 2 1/2	3/8-16 X 2 1/2		7/16-14 X 1 3/4	1/2-13 X 1 3/4	-	-
			HS6X5X12	-	-	-				1/2-13 X 1 3/4	5/8-11 X 2 1/4
			HS6X5X15	-	-	-				-	-

ITEM NO.	QTY. REQ.	DESCRIPTION	PUMP MODEL	NEMA MOTOR FRAME SIZE								
				184T	213T	215T	254T	256T	284T	286T	324T	
147	8	FLAT WASHER, MOTOR MOUNT	HS6X5X9	-	3/8	3/8	7/16 (4)	7/16 (4)	1/2 (4)	1/2 (4)	1/2	
			HS6X5X11	-								
			HS6X5X12	-								
			HS6X5X15	-	-							
												326T
147	8	FLAT WASHER, MOTOR MOUNT	HS6X5X9	-	-	-	-	-				
			HS6X5X11	1/2	-	-	-	-				
			HS6X5X12		-	-	-	-				
			HS6X5X15		5/8	5/8	5/8	3/4	3/4			

ITEM NO.	QTY. REQ.	DESCRIPTION	PUMP MODEL	IEC MOTOR FRAME SIZE							
				112M	132S	132M	160M	160L	180M	180L	200L
147	8	FLAT WASHER, MOTOR MOUNT	HS6X5X9	-	3/8	3/8	7/16 (4)	-	-	-	-
			HS6X5X11	-	-	-		7/16 (4)	1/2 (4)	-	-
			HS6X5X12	-	-	-				1/2 (4)	5/8
			HS6X5X15	-	-	-					

ITEM NO.	QTY. REQ.	DESCRIPTION	PUMP MODEL	NEMA MOTOR FRAME SIZE								
				184T	213T	215T	254T	256T	284T	286T	324T	
164	4	HEX NUT, MOTOR MOUNT	HS6X5X9	-	3/8-16	3/8-16	N/A	N/A	N/A	-	-	
			HS6X5X11	-						-	-	
			HS6X5X12	-	-	-				N/A	1/2-13	
			HS6X5X15	-	-	-						5/8-11
				326T	364T	365T	404T	405T				
164	4	HEX NUT, MOTOR MOUNT		-	-	-						
			HS6X5X9	-	-	-						
			HS6X5X11	-	-	-						
			HS6X5X12	1/2-13	-	-						
				5/8-11	5/8-11	-	3/4-10	3/4-10				

ITEM NO.	QTY. REQ.	DESCRIPTION	PUMP MODEL	IEC MOTOR FRAME SIZE							
				112M	132S	132M	160M	160L	180M	180L	200L
164	4	HEX NUT, MOTOR MOUNT	HS6X5X9	-	3/8-16	3/8-16	N/A	-	-	-	-
			HS6X5X11	-	-	-		N/A	N/A	-	-
			HS6X5X12	-	-	-				N/A	5/8-11
			HS6X5X15	-	-	3/8-16				-	

AW-1148 Rev1 SHEET 2 OF 2

