

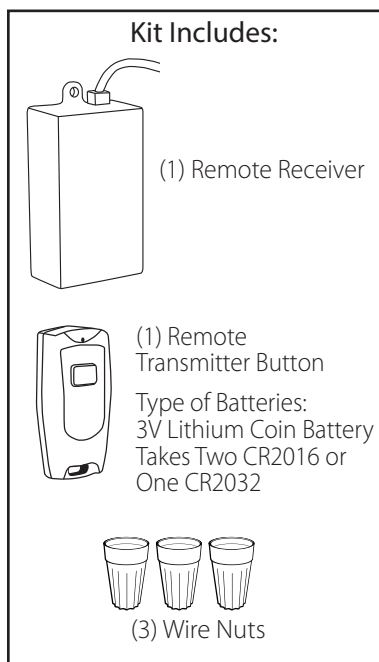
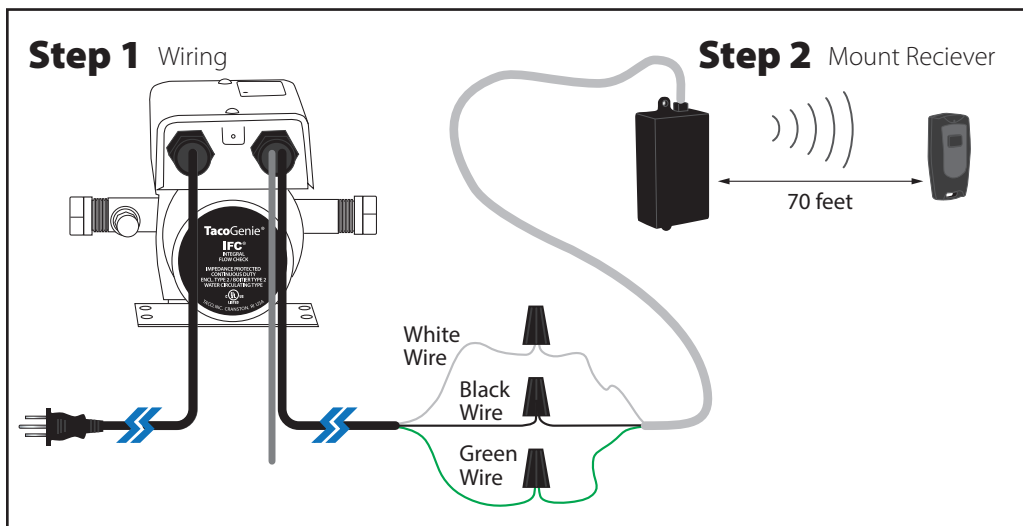
SUPERSEDES: September 15, 2015

EFFECTIVE: September 9, 2022

Plant ID# 001-4225

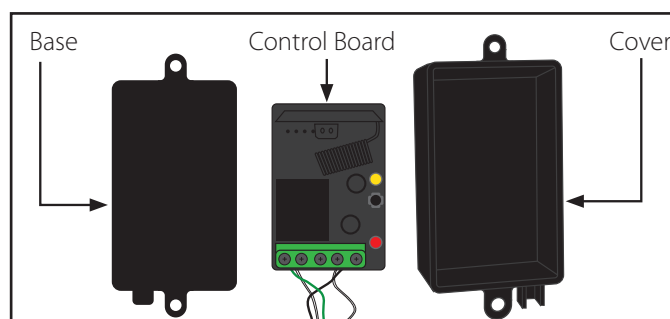
**Model #: 554-7**  
**Wireless Remote Transmitter & Receiver Kit**

**Installation Instructions:**



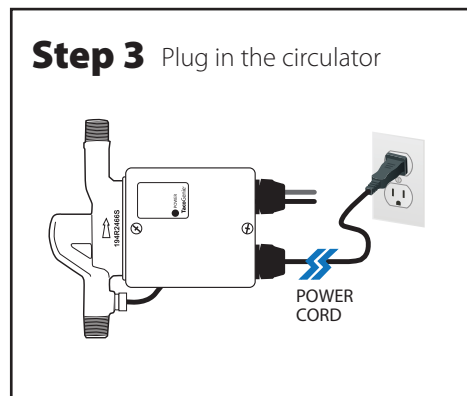
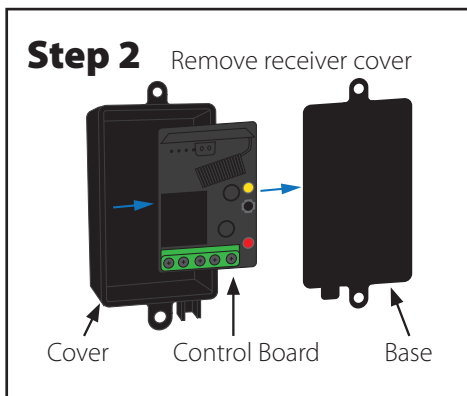
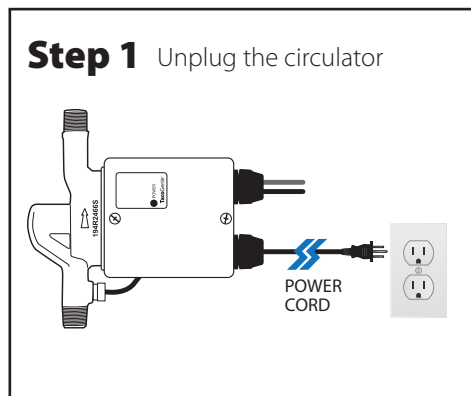
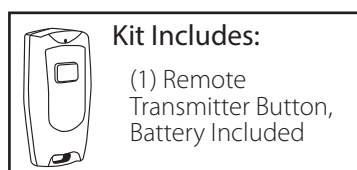
**NOTE: The remote transmitter button included with the remote is synced for use. It does not need programming.**

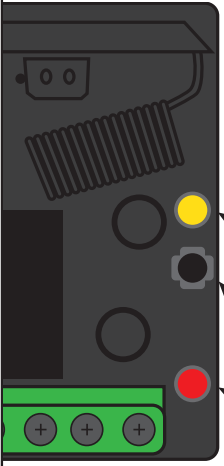
Please be advised any additional units will need to be synced.



**Model #: 554-8**  
**Wireless Remote Transmitter Button**

**Programming Instructions:**





Status - Yellow LED


Black Button

Power - Red LED

### Step 4

A red Power LED will light on the remote receiver.  
Press the black button once, the yellow status LED will illuminate.


**Caution: Holding the button for 5 seconds will wipeout the memory and require re-syncing of all transmitters.**



Press Remote Transmitter Button

When the button on the remote is pressed, the LED on the remote and the green LED on the receiver will light up.  
This confirms that the unit is synced.

Place the control board back into the remote receiver cover.  
Make sure the white wire is properly inserted into the cover cutout. Gently snap the cover and base together.



**3 seconds**

The yellow light will start to flash then stop. The unit is now synced.

### Removing the battery for the Transmitter

