



Installation and Wiring Instructions

TacoGenie® Motion Sensor

102-205

SUPERSEDES: December 16, 2014

EFFECTIVE: September 9, 2022

Plant ID# 001-3886

Model # 554-4

NOTE: Use wire nuts or electrical tape to isolate Red and Black wire leads in Gray Cord if round starter button is not installed.

Step 1

Place Motion Sensor at a convenient location to detect motion in the room but out of view from adjoining rooms or hallways.



Kit Includes:



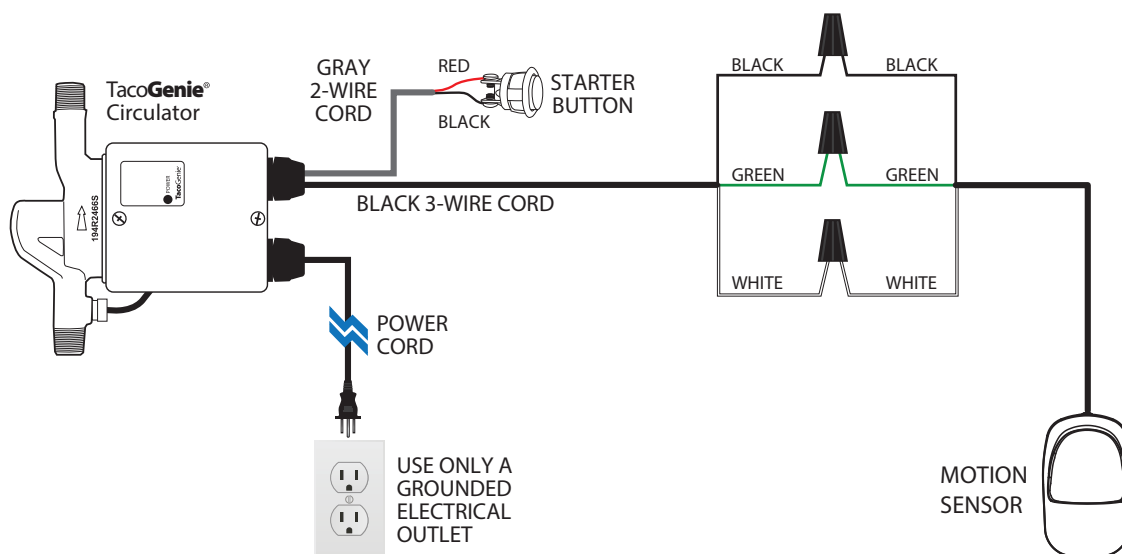
1 - Motion Sensor



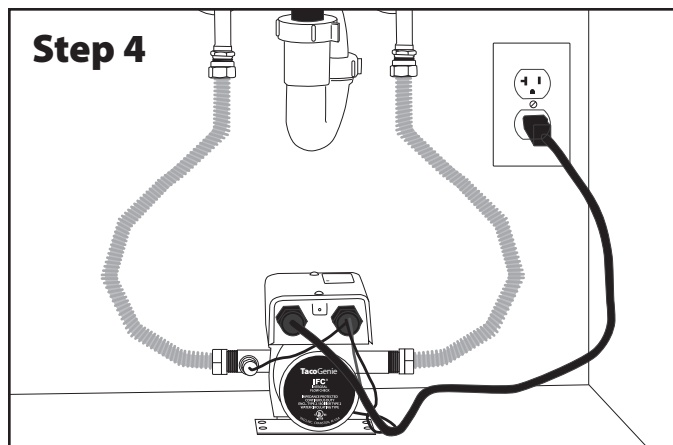
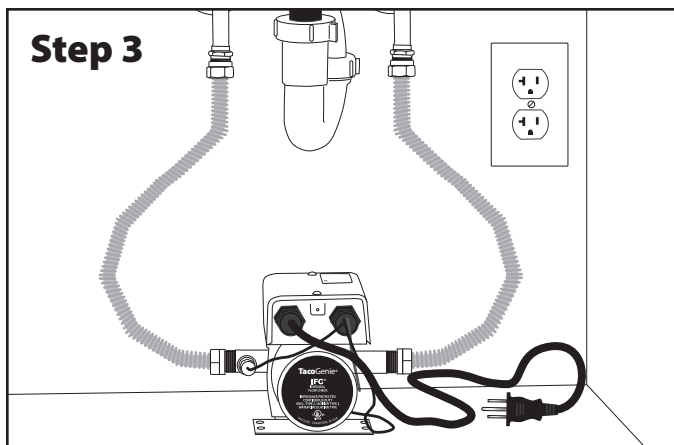
3 - Wire Nuts

Step 2

Connect Black, Green and White leads from Motion Sensor to corresponding Black, Green and White leads from Black 3-wire cord on TacoGenie Circulator (see below). Use wire nuts provided in kit.



NOTE: If an outlet does not exist under the sink, please contact a qualified electrician to install an outlet meeting local electrical codes.

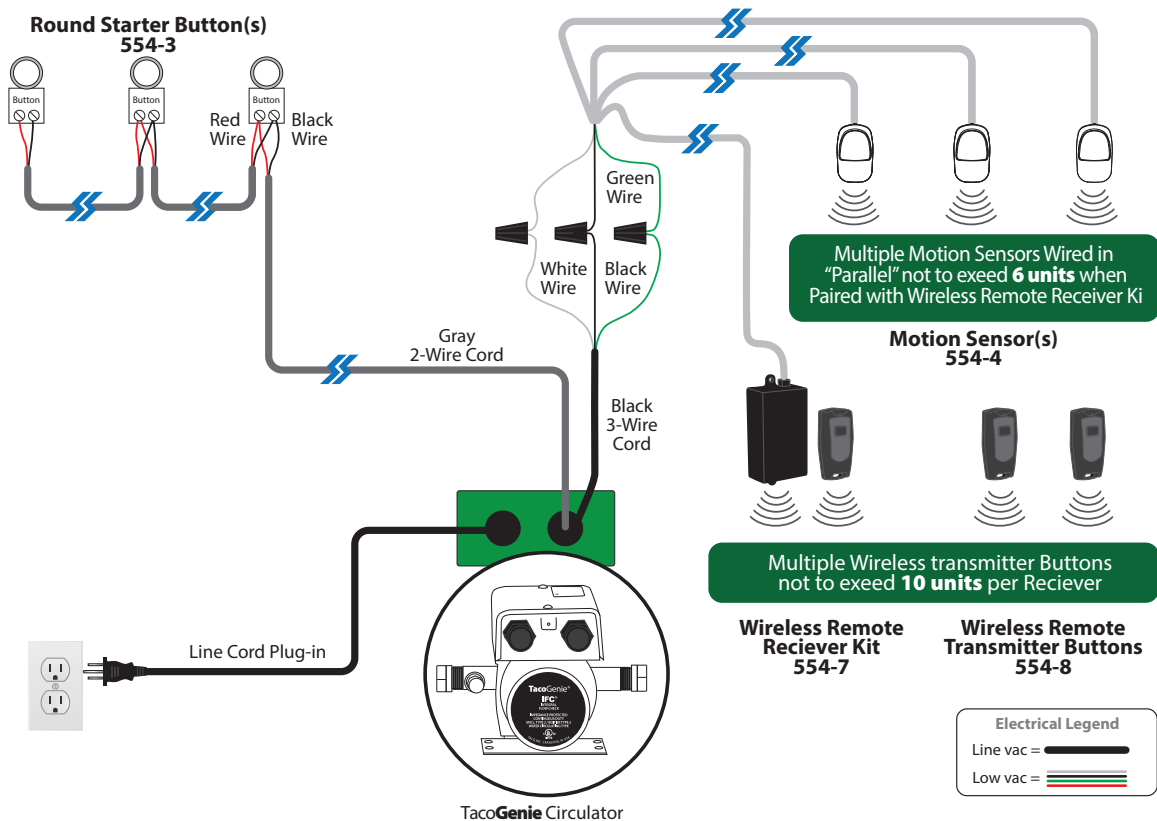


Plug in the circulator and it will start automatically, run until hot water is detected by the temperature sensor, and then stop. Set up is complete you are ready to enjoy hot water comfort.



Time delay of motion sensor

TacoGenie Button & Motion Sensor & Wireless Receiver Wiring Application



Taco Comfort Solutions® A Taco Family Company

Taco, Inc., 1160 Cranston Street, Cranston, RI 02920 | Tel: (401) 942-8000

Taco (Canada), Ltd., 8450 Lawson Road, Suite #3, Milton, Ontario L9T 0J8 | Tel: (905) 564-9422

Visit our web site: www.TacoComfort.com | ©2022 Taco, Inc.

