

SKV Series Pump | Submittal Data

Submittal No: 301-S931 | Model: SKV8011D | RPM: 1760 | HP: 25HP | Effective: August 23, 2021 | Supersedes: NEW

JOB: _____

REPRESENTATIVE: _____

ENGINEER: _____

CONTRACTOR: _____

PRODUCT DATA

ITEM NO. _____

DOE BASIC MODEL NO. SKV8011D-A-4P-PD

MODEL NO. _____ VOLTAGE _____

PEI_{VL} 0.47 HI ENERGY RATING 53

IMPELLER DIA. _____ WEIGHT _____

GPM _____ PUMP/MOTOR _____

HEAD/FT _____ FREQUENCY _____

RPM 1760 HP 25 PHASE _____

SUPPORT STAND OPTION YES NO
(Ductile Iron ASTM A536-84 Grade 65-45-12)

OPERATING SPECIFICATIONS

FLANGE	PRESSURE	TEMPERATURE
ANSI Class 125	175 PSIG* (1210 KPA)	250°F (120°C)
ANSI Class 250	300 PSIG** (2070 KPA)	250°F (120°C)

* In accordance with ANSI Standard B16.1 Class 125

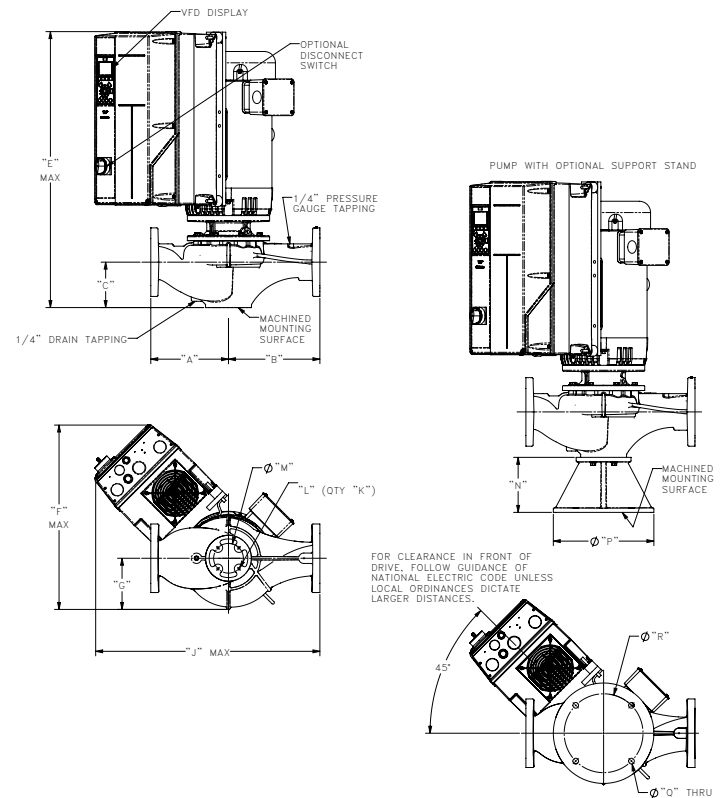
** In accordance with ANSI Standard B16.1 Class 250

DIMENSIONS

Model No. | 8011D

Flange Size (Suction x Discharge) | 8 x 8 (203 x 203)

HORSEPOWER	25
MOTOR FRAME TEFC	284JM
MOTOR FRAME ODP	284JM
WEIGHT WITHOUT OPTIONAL STAND LBS (KG)	1137.3 (516)
WEIGHT WITH OPTIONAL STAND LBS (KG)	1246.6 (565)
FLANGE SIZE ASA	8 (203)
A*	ANSI CLASS 125: 20.25 (514)
	ANSI CLASS 250: 20.75 (527)
B*	ANSI CLASS 125: 20.25 (514)
	ANSI CLASS 250: 20.75 (527)
C	10.63 (270)
E MAX	44.51 (1131)
F MAX	32.01 (813)
G	11.51 (292)
J MAX	35.12 (892)
K	4
L	1/2-13 UNC-2B
M	9 (229)
N	7.2 (183)
P	16.5 (419)
Q	0.75 (19)
R	14.5 (368)



*A & B Dimensions apply for all pump sizes.
English dimensions are in inches. Metric dimensions are in millimeters.
Metric data is presented in (). Do not use for construction purposes unless certified.

MATERIALS OF CONSTRUCTION			CASING	COVER	IMPELLER	WEAR RING	SHAFT	SHAFT SLEEVE	MECHANICAL SEAL	SEAL FLUSH LINE ASSEMBLY	SUPPORT STAND
STANDARD CONSTRUCTION	BRONZE FITTED	125# FLANGE	Cast Iron ASTM A48/A48M-03 Class 30A	Cast Iron ASTM A48/A48M-03 Class 30A	Bronze ASTM B584 ALLOY C83600 or C84400	N/A	Carbon Steel	Bronze ASTM B584-98A C92200	Ceramic/EPT	Copper & Brass C3600	N/A
		250# FLANGE	Ductile Iron ASTM A536-84 Grade: 65-45-12	Cast Iron ASTM A48/A48M-03 Class 30A	Bronze ASTM B584 ALLOY C83600 or C84400	N/A	Carbon Steel	Bronze ASTM B584-98A C92200	Ceramic/EPT	Copper & Brass C3600	N/A
OPTIONAL		125# OR 250#	N/A	N/A	Stainless Steel ASTM A351/A 351M-08	Bronze ASTM B584-98A C92200	N/A	Stainless Steel TYPE 303 ASTM A276	Tungsten Carbide/EPT or Silicon-Carbide/EPT	N/A	Ductile Iron ASTM A536-84 Grade 65-45-12

N/A - Not Available

DRIVE DATA

PROTOCOLS (Standard)	BACnet, Modbus RTU, N2 Metasys, FLN Apogee, FC Protocol
PROTOCOLS (Optional)	LonWorks® DeviceNet Profibus
ENCLOSURE	NEMA Type 12 / IP55 NEMA Type 4X / IP66
I/O (Standard)	6 Digital Inputs / 2 Digital Outputs 1 Analog Current Output / 2 Analog Inputs 2 Pulse Inputs 2 Form C Relays
ADDITIONAL CONTROL OPTIONS	None General Purpose I/O Relay Card 24VDC Supply Analog I/O
DISCONNECT SWITCH	Mechanical Fused
EMC/RFI CONTROL	Intergated filter designed to meet EN61800-3
HARMONIC SUPPRESSION	Dual DC-link chokes (Equivalent: 5% AC line reactor) Supporting IEEE 519-1992 requirements
COOLING	Fan-cooled through back channel
AMBIENT TEMPERATURE	-10°C to 45°C up to 1000 meters above sea level -14°F to 113°F up to 3300 feet above sea level

COMMENTS

