

# SKV Series Pump | Submittal Data

Submittal No: 301-S433 | Model: SKV2009D | RPM: 1760 | HP: 5HP | Effective: May 6, 2020 | Supersedes: NEW

JOB: \_\_\_\_\_

REPRESENTATIVE: \_\_\_\_\_

ENGINEER: \_\_\_\_\_

CONTRACTOR: \_\_\_\_\_

## PRODUCT DATA

ITEM NO. \_\_\_\_\_

DOE BASIC MODEL NO. SKV2009D-A-4P-PD

MODEL NO. \_\_\_\_\_ VOLTAGE \_\_\_\_\_

PEI<sub>VL</sub> 0.41 HI ENERGY RATING 59

IMPELLER DIA. \_\_\_\_\_ WEIGHT \_\_\_\_\_

GPM \_\_\_\_\_ PUMP/MOTOR \_\_\_\_\_

HEAD/FT \_\_\_\_\_ FREQUENCY \_\_\_\_\_

RPM 1760 HP 5 PHASE \_\_\_\_\_

NSF 61 CERTIFIED\* YES NO SUPPORT STAND OPTION YES NO  
\*Not configurable as a standard option; please contact your account manager to configure.  
 (Ductile Iron ASTM A536-84 Grade 65-45-12)

## OPERATING SPECIFICATIONS

FLANGE	PRESSURE	TEMPERATURE
ANSI Class 125	175 PSIG* (1210 KPA)	250°F (120°C)
ANSI Class 250	300 PSIG** (2070 KPA)	250°F (120°C)

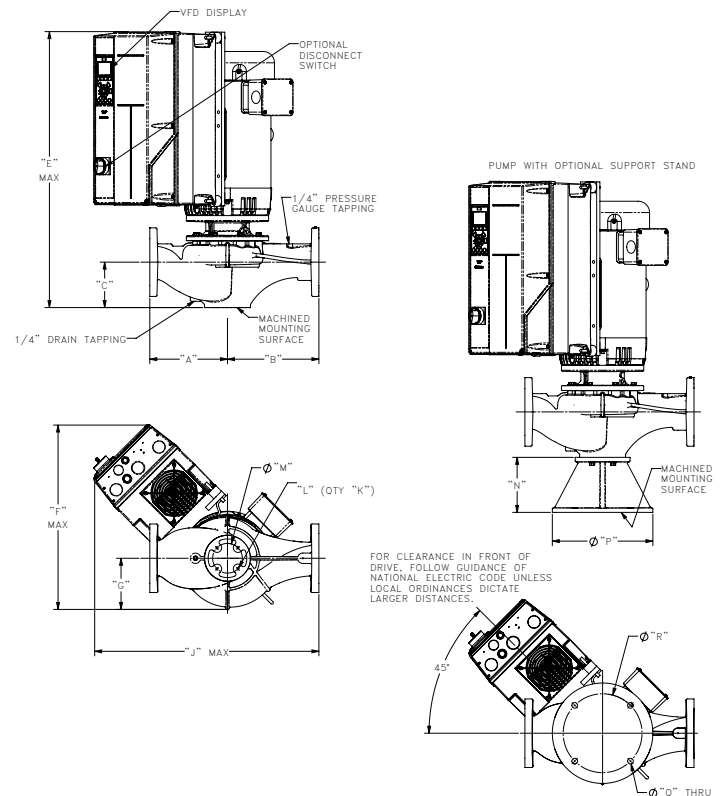
\* In accordance with ANSI Standard B16.1 Class 125

\*\* In accordance with ANSI Standard B16.1 Class 250

## DIMENSIONS

Model No. | 2009D  
 Flange Size (Suction x Discharge) | 2 x 2 (51 x 51)

HORSEPOWER	5
MOTOR FRAME TEFC	184JM
MOTOR FRAME ODP	184JM
WEIGHT WITHOUT OPTIONAL STAND LBS (KG)	323.6 (147)
WEIGHT WITH OPTIONAL STAND LBS (KG)	344.4 (156)
FLANGE SIZE ASA	2 (51)
A*	ANSI CLASS 125: 9 (229)
	ANSI CLASS 250: 9.25 (235)
B*	ANSI CLASS 125: 10 (254)
	ANSI CLASS 250: 10.25 (260)
C	4.87 (124)
E MAX	30.09 (764)
F MAX	22.54 (573)
G	6.72 (171)
J MAX	21.53
K	4
L	3/8-16 UNC-2B
M	2.5 (64)
N	6 (152)
P	9.38 (238)
Q	0.63 (16)
R	7.75 (197)



\*A & B Dimensions apply for all pump sizes.  
 English dimensions are in inches. Metric dimensions are in millimeters.  
 Metric data is presented in ( ). Do not use for construction purposes unless certified.

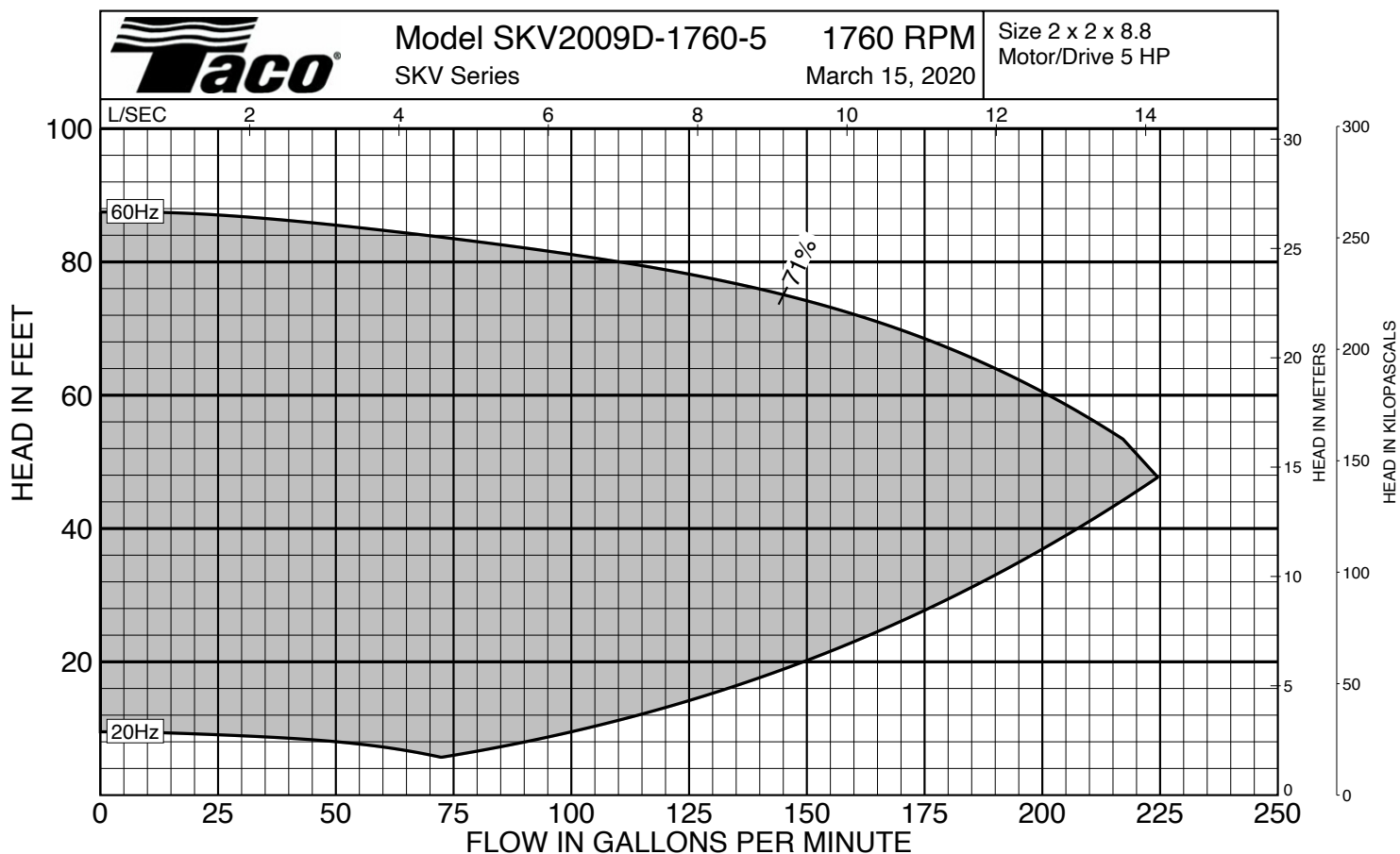
MATERIALS OF CONSTRUCTION			CASING	COVER	IMPELLER	WEAR RING	SHAFT	SHAFT SLEEVE	MECHANICAL SEAL	SEAL FLUSH LINE ASSEMBLY	SUPPORT STAND
STANDARD CONSTRUCTION	BRONZE FITTED	125# FLANGE	Cast Iron ASTM A48/A48M-03 Class 30A	Cast Iron ASTM A48/A48M-03 Class 30A	Bronze ASTM B584 ALLOY C83600 or C84400	N/A	Carbon Steel	Bronze ASTM B584-98A C92200	Ceramic/EPT	Copper & Brass C3600	N/A
		250# FLANGE	Ductile Iron ASTM A536-84 Grade: 65-45-12	Cast Iron ASTM A48/A48M-03 Class 30A	Bronze ASTM B584 ALLOY C83600 or C84400	N/A	Carbon Steel	Bronze ASTM B584-98A C92200	Ceramic/EPT	Copper & Brass C3600	N/A
OPTIONAL		125# OR 250#	N/A	N/A	Stainless Steel ASTM A351/A 351M-08	Bronze ASTM B584-98A C92200	N/A	Stainless Steel TYPE 303 ASTM A276	Tungsten Carbide/EPT or Silicon-Carbide/EPT	N/A	Ductile Iron ASTM A536-84 Grade 65-45-12
STANDARD CONSTRUCTION	NSF 61	125# FLANGE	Cast Iron ASTM A48/A48M-03 Class 30A	Cast Iron ASTM A48/A48M-03 Class 30A	Stainless Steel ASTM A351/A 351M-08	N/A	Carbon Steel	Bronze ASTM B584-98A C92200	Ceramic/EPT	Copper & Brass C3600	N/A
		250# FLANGE	Ductile Iron ASTM A536-84 Grade: 65-45-12	Cast Iron ASTM A48/A48M-03 Class 30A	Stainless Steel ASTM A351/A 351M-08	N/A	Carbon Steel	Bronze ASTM B584-98A C92200	Ceramic/EPT	Copper & Brass C3600	N/A
OPTIONAL		125# OR 250#	N/A	N/A	N/A	Bronze ASTM B584-98A C92200	N/A	N/A	N/A	N/A	Ductile Iron ASTM A536-84 Grade 65-45-12

N/A - Not Available

DRIVE DATA

PROTOCOLS (Standard)	BACnet, Modbus RTU, N2 Metasys, FLN Apogee, FC Protocol
PROTOCOLS (Optional)	LonWorks®    DeviceNet    Profibus
ENCLOSURE	NEMA Type 12 / IP55    NEMA Type 4X / IP66
I/O (Standard)	6 Digital Inputs / 2 Digital Outputs 1 Analog Current Output / 2 Analog Inputs 2 Pulse Inputs 2 Form C Relays
ADDITIONAL CONTROL OPTIONS	None    General Purpose I/O    Relay Card 24VDC Supply    Analog I/O
DISCONNECT SWITCH	Mechanical    Fused
EMC/RFI CONTROL	Intergated filter designed to meet EN61800-3
HARMONIC SUPPRESSION	Dual DC-link chokes (Equivalent: 5% AC line reactor) Supporting IEEE 519-1992 requirements
COOLING	Fan-cooled through back channel
AMBIENT TEMPERATURE	-10°C to 45°C up to 1000 meters above sea level -14°F to 113°F up to 3300 feet above sea level

COMMENTS



Curves based on Clear Water @ 60F with a Specific Gravity of 1.0