

Submittal Data Information

U Tube Heat Exchangers

201-008

6" DIAMETER LIQUID

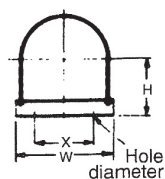
EFFECTIVE: APRIL 30, 2018

SUPERSEDES: APRIL 15, 1995

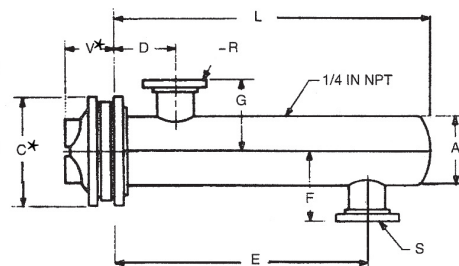
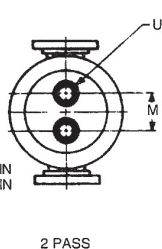
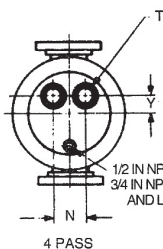
Job: _____

Item No	Model No	Pass	GPM Tubes	Temp. In	Temp. Out	P.D. Tubes	Vel. Tubes	GPM Shell	Temp. In	Temp. Out	P.D. Shell	Vel. Shell

Tube Fluid _____ Shell Fluid _____



SADDLES
(Optional)



DIMENSIONS

6 Inch Diameter

Model Number		Cast Iron Heads						Dimensions (inches)										Heating Surface (sq. ft.)	Shipping Weight (lbs.)		
2 Pass	4 Pass	2 Pass		4 Pass				2 and 4 Pass													
		M	U	N	T	Y	V*	A	C*	D	E	F	G	L	R	S					
G6204L	G6404L	4	2T	3¾	1½T	1¼	37/16	6⅝	11	5	18	57/8	57/8	25	2½T	2½T	9.1	120			
G6206L	G6406L	4	2T	3¾	1½T	1¼	37/16	6⅝	11	5	30	57/8	57/8	37	2½T	2½T	13.8	148			
G6208L	G6408L	4	2T	3¾	1½T	1¼	37/16	6⅝	11	5	42	57/8	57/8	49	2½T	2½T	18.5	182			
G6210L	G6410L	4	2T	3¾	1½T	1¼	37/16	6⅝	11	5	54	57/8	57/8	61	2½T	2½T	23.2	207			
G6212L	G6412L	4	2T	3¾	1½T	1¼	37/16	6⅝	11	5	66	57/8	57/8	73	2½T	2½T	27.9	235			
G6214L	G6414L	4	2T	3¾	1½T	1¼	37/16	6⅝	11	5	78	57/8	57/8	85	2½T	2½T	32.6	262			
G6216L	G6416L	4	2T	3¾	1½T	1¼	37/16	6⅝	11	5	90	57/8	57/8	97	2½T	2½T	37.3	290			
G6218L	G6418L	4	2T	3¾	1½T	1¼	37/16	6⅝	11	5	102	57/8	57/8	109	2½T	2½T	42.1	318			
G6220L	G6420L	4	2T	3¾	1½T	1¼	37/16	6⅝	11	5	114	57/8	57/8	121	2½T	2½T	46.8	346			

SADDLE DIMENSIONS: H-6⁵/₁₆; W-9¹/₄; X-7¹/₂; Hole Dia.-5/8

MATERIALS OF CONSTRUCTION (Unless otherwise indicated, standard will be furnished.)

	Standard
Shell	Steel
Head	Cast Iron 4-10"
	Fabricated Steel 12-30"
Tubes	3/4 x 20 BWG Copper
Tube Sheet	Steel
Separators	Steel
Working Pressure	150 PSIG (ASME)
Max. Temperature	375°F

	Optional
	304ss, 316ss
	* Cast Bronze, Fabricated Steel, Fabricated 304ss/316ss
	Fabricated 304ss/316ss
	3/4 x 18 BWG Copper, Steel, 304ss, 316ss, 90/10 Cu Ni
	Brass, 304ss, 316ss, 90/10 Cu Ni
	Brass, 304ss, 316ss, 90/10 Cu Ni
	Consult Factory
	Consult Factory

* When choosing any option with fabricated head type, refer to submittal 201-022 for head dimensions. Fabricated heads will feature flanged connections.

All dimensions shown are subject to change and should not be used for pre-piping. Contact your local Taco representative should certified dimensional drawings be required.

