

# Submittal Data Information

## Double Wall Heat Exchangers

201-074

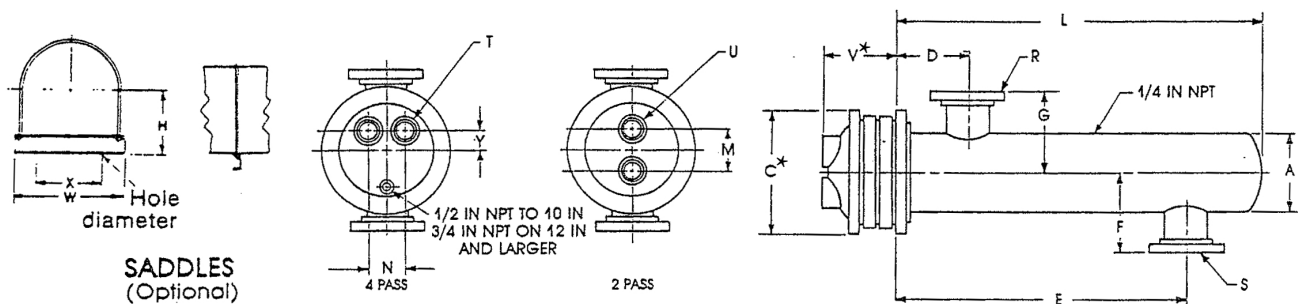
4" Diameter Liquid

SUPERSEDES: January 2, 1991

EFFECTIVE: April 30, 2018

Item No	Model No	Pass	GPM Tubes	Temp. In	Temp. Out	P.D. Tubes	Vel. Tubes	GPM Shell	Temp. In	Temp. Out	P.D. Shell	Vel. Shell

Tube Fluid \_\_\_\_\_ Shell Fluid \_\_\_\_\_



### DIMENSIONS: 4 Inch Diameter

Model Number		Cast Iron Heads						Dimensions (inches)									Heating Surface (sq. ft.)	Shipping Weight (lbs.)
2 Pass	4 Pass	2 Pass		4 Pass				2 and 4 Pass										
		M	U	N	T	Y	V*	A	C*	D	E	F	G	L	R	S		
G4204L	G4404L	2½	1½T	2¾	1T	7⁄8	3½	4½	9	5	19½	3⅞	3⅞	24½	1½T	1½T	9.2	76
G4206L	G4406L	2½	1½T	2¾	1T	7⁄8	3½	4½	9	5	31½	3⅞	3⅞	36½	1½T	1½T	14.0	86
G4208L	G4408L	2½	1½T	2¾	1T	7⁄8	3½	4½	9	5	43½	3⅞	3⅞	48½	1½T	1½T	18.6	95
G4210L	G4410L	2½	1½T	2¾	1T	7⁄8	3½	4½	9	5	55½	3⅞	3⅞	60½	1½T	1½T	23.4	105
G4212L	G4412L	2½	1½T	2¾	1T	7⁄8	3½	4½	9	5	67½	3⅞	3⅞	72½	1½T	1½T	28.2	115
G4214L	G4414L	2½	1½T	2¾	1T	7⁄8	3½	4½	9	5	79½	3⅞	3⅞	84½	1½T	1½T	32.8	125
G4216L	G4416L	2½	1½T	2¾	1T	7⁄8	3½	4½	9	5	91½	3⅞	3⅞	96½	1½T	1½T	37.6	135
G4218L	G4418L	2½	1½T	2¾	1T	7⁄8	3½	4½	9	5	103½	3⅞	3⅞	108½	1½T	1½T	42.2	145
G4220L	G4420L	2½	1½T	2¾	1T	7⁄8	3½	4½	9	5	115½	3⅞	3⅞	120½	1½T	1½T	47.0	155

SADDLE DIMENSIONS: H-5¼; W-6¼; X-5½; Hole Dia.-½

MATERIALS OF CONSTRUCTION (Unless otherwise indicated, standard will be furnished.)

	Standard
Shell	Steel
Head	Cast Iron 4-10" Fabricated Steel 12-30"
Tubes	3/4 x Double Wall Copper/Copper
Tube Sheet Tube Side	Steel
Tube Sheet Shell Side	Steel
Separators	Steel
Working Pressure	150 PSIG (ASME)
Max. Temperature	375°F

	Optional
	304ss, 316ss
	* Cast Bronze, Fabricated Steel, Fabricated 304ss/316ss
	Fabricated 304ss/316ss
	3/4 x Double Wall Cu-Ni/Cu-Ni
	304ss, 316ss
	304ss, 316ss
	Brass, 304ss, 316ss, 90/10 Cu Ni
	Consult Factory
	Consult Factory

\* When choosing any option with fabricated head type, refer to submittal 201-022 for head dimensions. Fabricated heads will feature flanged connections.

All dimensions shown are subject to change and should not be used for pre-piping. Contact your local Taco representative should certified dimensional drawings be required.

