

Header Pump Kit (HPK) and Replacement Pump Kit (RPK) less Volute Instruction Sheet

Fits Bell & Gossett® and Armstrong® Pumps (*Both not affiliated with Taco, Inc.)

SUPERSEDES: October 1, 2011
Plant ID: 001-3815

EFFECTIVE: July 10, 2015



WARNING: Before proceeding with any of these instructions, make certain that power is disconnected and locked out. Electrical power to the boiler and any related accessory must also be disconnected and locked out. Failure to follow these instructions could result in injury or death.

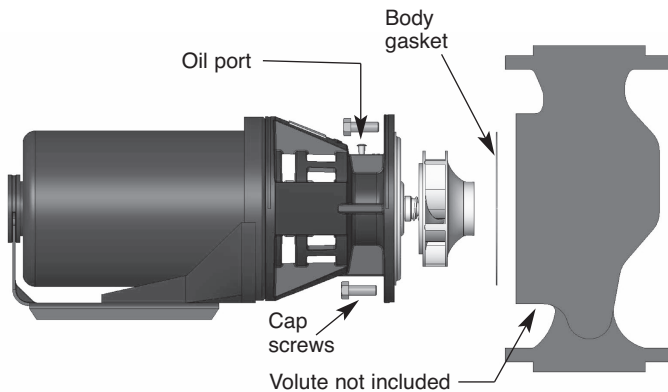


CAUTION: Check surfaces for high temperatures. Allow the pump/piping temperature to reach approximately 100°F before proceeding. Failure to follow these instructions could result in severe personal injury and/or property damage.



CAUTION: Close the valves on the suction and discharge sides of the pump before proceeding. If no valves have been installed, it will be necessary to drain the system. If it becomes necessary to drain the system, close the city water supply or shutoff valve to the pressure reducing valve. Allow the system to cool to approximately 100°F. Open the drain valve (take precautions against water damage) and leave the drain valve open until servicing is completed. Failure to follow these instructions could result in severe personal injury and/or property damage.

Pump Replacement Cross Reference



Model No.		Replaces all Models, Iron or Bronze	
		Bell & Gossett	Armstrong
115V Single Phase	RPK-A-100	100	S-25
	RPK-B-101	HV or 2" (old & new)	H-32, S-35
	RPK-C-100	PR	H-41
	RPK-C-101	2½ or LD3	S-45 (2½" or 3")
	RPK-C-102	HD3	S-46
	RPK-D-100	PD35S	S-55
	RPK-D-101	PD37S, 60-14, 611S	S-57, H-54
	RPK-D-102	60-11 (604S)	H-51
	RPK-D-103	60-2	H-52
	RPK-D-104	60-13 (608S)	H-53
230V Three Phase	RPK-D-200	PD35T	S-55 3Ph
	RPK-D-201	PD37T, 60-14T, 611T	S-57, H-54 3Ph
	RPK-D-204	60-13T (608T)	H-53 3Ph

1. Close all service shut-off valves on suction & discharge side of pump. If service valves are not available, close the water supply, disconnect power if applicable and drain system. Be sure to follow safety caution instructions above.
2. Disconnect all power to pump and related equipment. Remove capacitor cover and disconnect wire nuts. Remove flexible conduit from capacitor box.
3. Loosen the pump body cap screws. Shift the pump assembly slightly to allow any pressurized water to drain. Remove the pump body cap screws.
4. Remove complete pump assembly from pump body.
5. Remove the old body gasket, clean all surfaces thoroughly and install the new gasket provided. **When repairing or replacing a header pump, examine the sealing surfaces of the header before re-installing the header pump. If the outer gasket surface is a smooth machined surface, use only the new gasket (item 5) to seal the surface (see Figures A & B). If the outer gasket surface is not machined smooth or is damaged, use only the o-ring (item 8) installed into the inside step of the header (see Figures A & B).**



CAUTION: Be sure not to over-tighten cap screws. A gap will be visible between pump body and bearing bracket. This is by design to allow leak path in case of seal leak.



CAUTION: Bearing assembly is shipped without oil. Be sure to lubricate bearing assembly properly or early failure may result and warranty will be void.



CAUTION: Pressurize the pump body slowly. Be aware that hot water leaks could occur. Check for leaks at all gasketed joints. Failure to follow these instructions could result in severe personal injury and/or property damage.

6. Install new Pro-Fit® Header Pump Kit or Replacement Pump Kit assembly on to pump body or boiler header. Position pump with bracket oiling port in the upright position. Tighten pump body cap screws evenly. Do not overtighten.
7. Lubricate new bearing assembly, following instructions on oil tube provided in kit.
8. Close system drain valve. Open service shut-off valves on pump suction and discharge.
9. Open water supply to refill system and pressurize pump body slowly. Check closely for any leaks.
10. Reconnect electrical power to pump and related equipment. Check for proper pump operation.

PERIODIC INSPECTION: Pro-Fit® products are designed to provide years of trouble free service. However, it is recommended that periodic inspections be made to check for proper operation or leakage. If there is any evidence of leakage, repair or replace bearing assembly immediately.

Figure: A

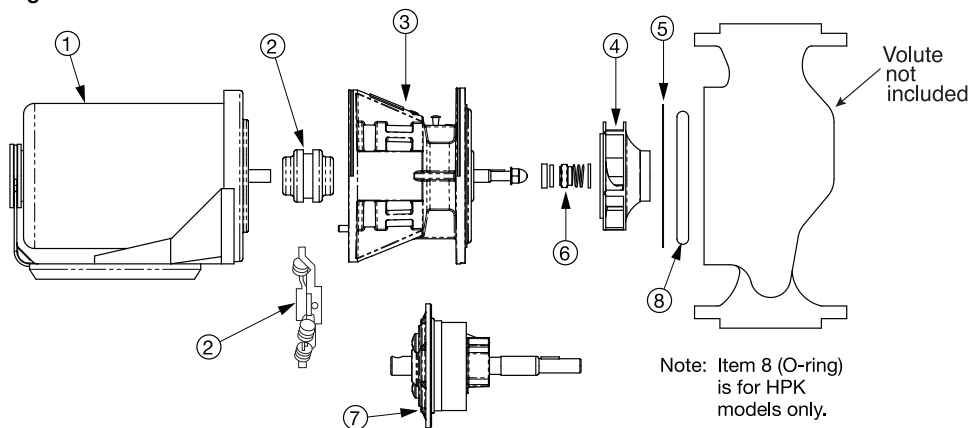
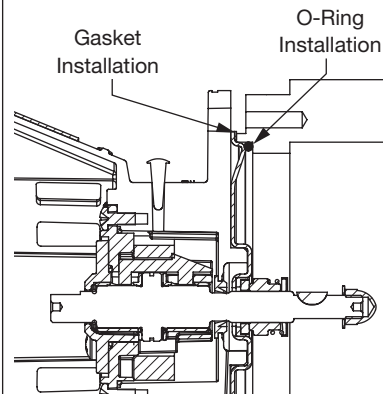


Figure: B



Replacement Parts List

	Pro-Fit Model No.	1 Motor	2 Coupler	3 Bearing Assembly	4 Impeller	5 Body Gasket	6 Seal Kit	7 Cartridge	8 O-ring
Header Pump Kit	HPK-D-100	MOT-D-102	COU-D-100	BRG-D-100	IMP-D-105	GSK-D-100			ORG-D-100
	HPK-D-102	MOT-D-104	COU-D-100	BRG-D-100	IMP-D-106	GSK-D-100			ORG-D-100
Replacement Pump Kit	115V Single Phase	RPK-A-100	MOT-A-100	COU-ABC-100	BRG-A-100	IMP-A-100	SLK-ABCDE-100	CAR-ABCD-100	N/A
		RPK-B-100	MOT-B-100	COU-ABC-100	BRG-B-100	IMP-B-100			
		RPK-B-101	MOT-B-101	COU-ABC-100	BRG-B-101	IMP-B-100			
		RPK-C-100	MOT-B-100	COU-ABC-100	BRG-C-100	IMP-C-100			
		RPK-C-101	MOT-C-100	COU-ABC-100	BRG-C-100	IMP-C-101			
		RPK-C-102	MOT-C-101	COU-ABC-100	BRG-C-100	IMP-C-102			
		RPK-D-100	MOT-D-102	COU-D-100	BRG-D-100	IMP-D-100			
		RPK-D-101	MOT-D-104	COU-D-100	BRG-D-100	IMP-D-101			
		RPK-D-102	MOT-D-100	COU-D-100	BRG-D-100	IMP-D-102			
		RPK-D-103	MOT-D-101	COU-D-100	BRG-D-100	IMP-D-103			
		RPK-D-104	MOT-D-102	COU-D-100	BRG-D-100	IMP-D-104			
	230V Three Phase	RPK-D-200	MOT-D-103	COU-D-100	BRG-D-100	IMP-D-100			
		RPK-D-201	MOT-D-105	COU-D-100	BRG-D-100	IMP-D-101			
		RPK-D-204	MOT-D-103	COU-D-100	BRG-D-100	IMP-D-104			

LIMITED WARRANTY STATEMENT

Taco, Inc. will repair or replace without charge (at the company's option) any product or part which is proven defective under normal use within two (2) years from the date of start-up or two (2) years and six (6) months from date of shipment (whichever occurs first).

In order to obtain service under this warranty, it is the responsibility of the purchaser to promptly notify the local Taco stocking distributor or Taco in writing and promptly deliver the subject product or part, delivery prepaid, to the stocking distributor. For assistance on warranty returns, the purchaser may either contact the local Taco stocking distributor or Taco. If the subject product or part contains no defect as covered in this warranty, the purchaser will be billed for parts and labor charges in effect at time of factory examination and repair.

Any Taco product or part not installed or operated in conformity with Taco instructions or which has been subject to misuse, misapplication, the

addition of petroleum-based fluids or certain chemical additives to the systems, or other abuse, will not be covered by this warranty.

If in doubt as to whether a particular substance is suitable for use with a Taco product or part, or for any application restrictions, consult the applicable Taco instruction sheets or contact Taco at [401-942-8000].

Taco reserves the right to provide replacement products and parts which are substantially similar in design and functionally equivalent to the defective product or part. Taco reserves the right to make changes in details of design, construction, or arrangement of materials of its products without notification.

TACO OFFERS THIS WARRANTY IN LIEU OF ALL OTHER EXPRESS WARRANTIES. ANY WARRANTY IMPLIED BY LAW INCLUDING WARRANTIES OF MERCHANTABILITY OR FITNESS IS IN EFFECT ONLY FOR THE DURA-

TION OF THE EXPRESS WARRANTY SET FORTH IN THE FIRST PARAGRAPH ABOVE.

THE ABOVE WARRANTIES ARE IN LIEU OF ALL OTHER WARRANTIES, EXPRESS OR STATUTORY, OR ANY OTHER WARRANTY OBLIGATION ON THE PART OF TACO.

TACO WILL NOT BE LIABLE FOR ANY SPECIAL, INCIDENTAL, INDIRECT OR CONSEQUENTIAL DAMAGES RESULTING FROM THE USE OF ITS PRODUCTS OR ANY INCIDENTAL COSTS OF REMOVING OR REPLACING DEFECTIVE PRODUCTS.

This warranty gives the purchaser specific rights, and the purchaser may have other rights which vary from state to state. Some states do not allow limitations on how long an implied warranty lasts or on the exclusion of incidental or consequential damages, so these limitations or exclusions may not apply to you.

Taco Comfort Solutions™ A Taco Group Company

Taco, Inc., 1160 Cranston Street, Cranston, RI 02920 | Tel: (401) 942-8000 | FAX: (401) 942-2360

Taco (Canada), Ltd., 8450 Lawson Road, Suite #3, Milton, Ontario L9T 0J8 | Tel: (905) 564-9422 | FAX: (905) 564-9436

Visit our web site: www.TacoComfort.com | Printed in USA | ©2015 Taco, Inc.

